

**PRIVATE TREATY
BULLS FOR SALE**

FM RED ANGUS

Dudley & Marilyn Mackey
8466 N. Hwy. 14-16
Gillette WY 82716
307.686.9091

**REGISTERED
RED ANGUS**

Dudley cell-307.680.4401 Marilyn cell-307.680.2102

Email: fmredangus@vcn.com Website www.fmredangus.com

Greetings in 2024! We hope you enjoyed many of the blessings of 2023, rain, grass, and great prices on your calves in the fall. We have a great line-up of yearling bulls with several sire groups to choose from.

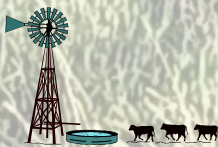
Our management priorities

- Efficient cattle who convert grass into a delicious, nutritious protein with the least labor and financial cost to the producer. We feed our mature cow herd very little supplemental feed in normal conditions with an added protein supplement a couple of months before calving to ensure they and the calf are strong and healthy.
- We calve in April and May reducing feed and labor costs, sickness, and death loss during the calving season and through weaning.
- Maternal priorities are to calve unassisted, good disposition, udders, and sound feet.
- Years of extensive record keeping on our maternal herd provides data for culling, keeping replacements, and bull selection.
- Red Angus Association Red Navigator test on our commercial replacement heifers and GGD-LD test for our registered heifer replacements

Bull priorities:

- Dam must meet our maternal priorities.
- No white markings
- Good disposition
- DNA and sire verified with the GGD-LD test.
- Developed on high quality hay, an 18% protein cake, and a good mineral program for high fertility, longevity, range fit and ready to go to work, not show steer fat.
- Top percentage range in EPD's through top quality sires

Our bulls have always passed their breeding soundness exam with excellent semen quality and we are proud to say, not a single failure to date. Drs. Jay and Brandi Hudson do our bull soundness and fertility exams typically in April. These bulls will be ready to go to their new home sometime around mid-April, depending on availability of our vets to get them tested as well as the weather and your needs. We invite you to come and look at them at any time and choose your purchase. Please call if you have any questions or need more information.



We look forward to hearing from you!

Dudley & Marilyn



RED ANGUS GUIDE TO EPDS

RedAngus.org

ProS Profitability and Sustainability is an all-purpose index that predicts average economic differences in all segments in the beef supply chain. This index is a combination of the breeding objectives modeled in the HerdBuilder and GridMaster selection indexes. In this index, replacement heifers are retained from within the herd and all remaining progeny are fed out to slaughter and sold on a quality-based grid. Traits included in this index include calving ease, growth, HPG, STAY, Mature Weight, Dry Matter Intake and carcass traits. The resulting index is expressed in dollars per head born (Index/High Value).

HB HerdBuilder is a maternal selection index that predicts the economic differences of animals for traits that are important from conception through weaning. Expressed as dollars per head born, HB is calculated based on the scenario that bulls are mated to heifers and cows, replacement heifers are retained and all remaining progeny are marketed at weaning. Traits included in the HB index include Calving Ease Direct, Calving Ease Maternal, Weaning Weight, Milk, Mature Weight, Heifer Pregnancy and Stayability (Index/High Value).

GM GridMaster is a selection index that predicts the average economic difference of non-replacement calves through the post-weaning phase of production. GM places selection pressure on growth, feedyard performance and carcass traits. Expressed as dollars per head born, GM is calculated based on the scenario that progeny are fed out to slaughter and marketed on a quality-based carcass grid. Traits included in GM include Average Daily Gain, Carcass Weight, Dry Matter Intake, Marbling, Back Fat and Rib Eye Area (Index/High Value).

CED Calving Ease Direct predicts differences in the percent of calves born unassisted out of 2-year-old dams. (Percent/High Value)

BW Birth Weight predicts differences in actual birth weight of progeny. (Pounds/Low Value)

WW Weaning Weight predicts differences in 205-day weaning weight. (Pounds/High Value)

YW Yearling Weight predicts differences in 365-day yearling weight. (Pounds/High Value)

ADG Average Daily Gain predicts differences in weight gain between 205 and 365 days of age. (Pounds/High Value)

DMI Dry Matter Intake predicts differences in daily feed intake as measured in a feedlot during the post-weaning period. (Pounds/Low Value)

MILK Milk predicts differences in weaning weight attributed to the milking ability of the animal's daughters. (Pounds/High Value)

ME Maintenance Energy predicts the difference in maintenance energy requirements. (Mcal per Month/Low Value)

HPG Heifer Pregnancy predicts differences in the percent of daughters who are able to conceive and calve at 2 years of age following exposure to breeding. (Percent/High Value)

CEM Calving Ease Maternal predicts differences in the percent of daughters who are able to calve unassisted as 2-year-old heifers. (Percent/High Value)

STAY Stayability predicts differences in the ability of an animal's retained daughters to remain productive in the herd – calve every year – through 6 years of age. (Percent/High Value)

MARB Marbling predicts differences in marbling score – amount of intramuscular fat measured at the 13th rib. (Marbling Score Units/High Value)

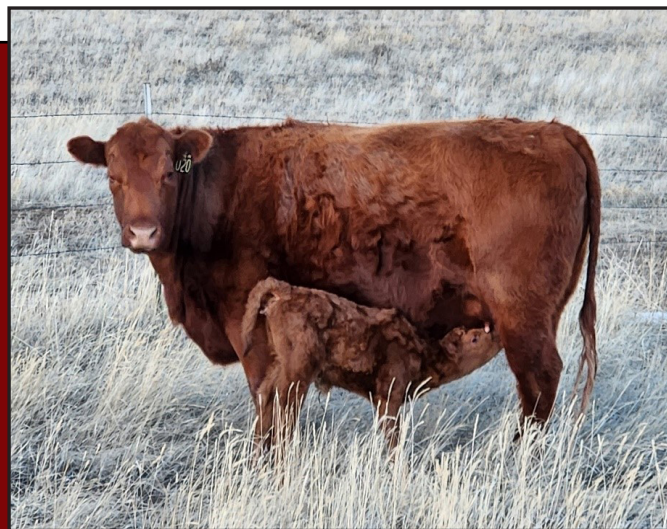
YG Yield Grade predicts differences in USDA Yield Grade, which is calculated using CW, REA and Fat. (Yield Grade Units/Low Value)

CW Carcass Weight predicts differences in actual hot carcass weight. (Pounds/High Value)

REA Ribeye Area predicts differences in square inches of ribeye area measured at the 13th rib. (Square Inches/High Value)

FAT Fat predicts differences in the depth of backfat measured between the 12th and 13th ribs. (Inches/Low Value)

ProS - Profitability and Sustainability is an all-purpose index that predicts average economic differences in all segments in the beef supply chain. This index is a combination of the breeding objectives modeled in the HerdBuilder and GridMaster selection indexes. In this index, replacement heifers are retained from within the herd and all remaining progeny are fed out to slaughter and sold on a quality-based grid. Traits included in this index include calving ease, growth, HPG, STAY, Mature Weight, Dry Matter Intake and carcass traits. The resulting index is expressed in dollars per head born (Index/High Value).



First calf in 2023 out of a Night Calver daughter with heifer calf AI sired by LSF SRR REDEEM 4103B

Ask About Volume Discounts On All Bull Purchases!!

AI SONS OF LSF PROSPECT 2035Z REG #1547645

We have used this son of LSF Night Calver 9921W for a couple of years. He has shown the same genetic potential, great body conformation and top EPD's as his sire. The last of the Night Calver semen sold in 2022 for \$175-\$200 per unit at Ludvigson's dispersal sale.



301

FM MACKEY PROSPECT 301

\$5,000

DOB: 03-27-2023 100% AR RAAA# 4819287 DAM DOB: 02-07-2016

MESSMER PACKER S008
LSF NIGHT CALVER 9921W
LSF DELLA P4078 U8051
LSF PROSPECT 2035Z
BIEBER ROMERO 9136
LSF BLACKBIRD N3080 X0406
LSF BLACKBIRD 4055 N3080
BECKTON NEBULA P P707
BROWN JYJ REDEMPTION Y1334
JYJ MS JOLENE W16
LSF SRR FLOMARIE B4341 D6161
RED LAZY MC SERGEANT 97Z
LSF SRR FLO MARIE B4341
SRR FLO-MARIE 254-7017

	ProS	HB	GM	CED	BW	WW	YW	MILK	ME	HPG	CEM	STAY
EPD	137	92	46	15	-3.7	62	104	33	2	12	10	19
TOP %	4	3	32	16	18	43	34	5	41	31	8	10

Act BW	Adj WW
89	703

	ADG	YG	CW	REA	MARB	DMI
EPD	0.29	0.1	33	0.25	0.34	1.56
TOP %	13	71	15	25	67	57

We really like this Prospect son; he has depth, length, and great eye appeal.

302

FM MACKEY PROSPECT 302

\$5,000

DOB: 03-28-2023 100% AR RAAA# 4819279 DAM DOB: 04-05-2016

MESSMER PACKER S008
LSF NIGHT CALVER 9921W
LSF DELLA P4078 U8051
LSF PROSPECT 2035Z
BIEBER ROMERO 9136
LSF BLACKBIRD N3080 X0406
LSF BLACKBIRD 4055 N3080
BECKTON NEW ERA Y194
BECKTON NEW ERA A332 E2
BECKTON ROSE W346 E
1RTR1689
1RTR BANDO RED ROCKER 701
RTR 1024
RTR MS BANDO

	ProS	HB	GM	CED	BW	WW	YW	MILK	ME	HPG	CEM	STAY
EPD	125	99	26	16	-5.4	39	63	35	-2	13	10	20
TOP %	9	1	73	9	4	97	95	1	24	27	5	3

Act BW	Adj WW
83	594

	ADG	YG	CW	REA	MARB	DMI
EPD	0.14	0.13	11	-0.03	0.33	0.64
TOP %	94	82	89	83	70	5

302 is moderately framed and well balanced. Every calf of his dam has been kept as a bull or replacement heifer. She raised a set of twin bull calves in 2022 for a combined weaning weight of 1165#- with no supplemental feed!



117- daughter of 689, sired by Night Calver- dam of Lot 310

926- daughter of 689, sired by Crump Express



689- Dam to Lot 302
Two of her daughters shown at right.

AI SONS OF LSF SRR REDEEM 4103B REG #1682142

We are pleased with the calving ease combined with the growth potential of his sons. Redeem's maternal sire is the sire of LSF Night Calver, and you can see the uniformity in their body conformation and great EPDs.

304 FM MACKEY REDEEM 304 \$4,500

DOB: 03-29-2023 100% AR RAAA# 4819289 DAM DOB: 04-04-2016

BECKTON NEBULA P P707
BROWN JYJ REDEMPTION Y1334
JYJ MS JOLENE W16
LSF SRR REDEEM 4103B
MESSMER PACKER S008
LSF COUNTESS T7211 W9067
LSF COUNTESS K1490 T7211
MESSMER PACKER S008
LSF NIGHT CALVER 9921W
LSF DELLA P4078 U8051
LSF SRR FLO-MARIE 961 D6442
BASIN EXT 5233
SRR FLO-MARIE 961-150
SRR FLO-MARIE 150-185

	ProS	HB	GM	CED	BW	WW	YW	MILK	ME	HPG	CEM	STAY
EPD	111	71	41	17	-4.5	57	93	28	3	13	12	15
TOP %	21	20	42	7	10	65	60	28	48	23	1	55

Act BW	Adj WW
82	575

	ADG	YG	CW	REA	MARB	DMI
EPD	0.22	0.14	38	0.13	0.32	1.27
TOP %	58	87	8	49	72	32

This Redeem son's dam was struck by lightning in mid August, and he still weaned a respectable 575# ADJ WW and top 7% CED. His dam and the dam of Lot 312 are ET daughters of LSF Night Calver 9921W.

305 FM MACKEY REDEEM 305 \$4,000

DOB: 03-27-2023 87.5% AR 12.5% RAAA# 4819299 DAM DOB: 04-10-2019

BECKTON NEBULA P P707
BROWN JYJ REDEMPTION Y1334
JYJ MS JOLENE W16
LSF SRR REDEEM 4103B
MESSMER PACKER S008
LSF COUNTESS T7211 W9067
LSF COUNTESS K1490 T7211
LSF NIGHT CALVER 9921W
FM MACKEY NIGHT CALVER 701
FM 1552 *COMMERCIAL DAM SIRE VERIFIED BY RAAA RED NAVIGATOR TO TR NUGGET AT361 #1620742
FM MACKEY CRNEXA NC701 1919
LSF SAGA 1040Y
CRUMP NEXA 672
MDM NEXA 788

	ProS	HB	GM	CED	BW	WW	YW	MILK	ME	HPG	CEM	STAY
EPD	109	66	43	13	-2.1	67	108	26	-1	12	8	15
TOP %	24	28	38	47	45	25	26	45	29	46	22	55

Act BW	Adj WW
92	674

	ADG	YG	CW	REA	MARB	DMI
EPD	0.24	0.18	35	0.03	0.38	1.46
TOP %	42	95	12	72	57	47

His dam is one of twin daughters raised by 672 (dam of 318) with no supplemental feed. We believe good maternal lines will put \$\$ in your pockets with their steer calves and good replacement heifers for your herd.



Dam 103, a two year-old Redeem daughter with FM Mackey Stockmarket 309 son on July 25, 2023

306 FM MACKEY REDEEM 306 \$5,000

DOB: 03-30-2023 87.5% AR 12.5% RAAA# 4819307 DAM DOB: 04-28-2020

BECKTON NEBULA P P707
BROWN JYJ REDEMPTION Y1334
JYJ MS JOLENE W16
LSF SRR REDEEM 4103B
MESSMER PACKER S008
LSF COUNTESS T7211 W9067
LSF COUNTESS K1490 T7211
LSF NIGHT CALVER 9921W
FM MACKEY NIGHT CALVER 703
FM 1555 *COMMERCIAL DAM SIRE VERIFIED BY RAAA RED NAVIGATOR TO TR NUGGET AT361 #1620742
FM MACKEY LSF FLO-MARIE 022
BROWN JYJ REDEMPTION Y1334
LSF SRR FLO-MARIE B4341 D6161
LSF SRR FLO-MARIE B4341

	ProS	HB	GM	CED	BW	WW	YW	MILK	ME	HPG	CEM	STAY
EPD	130	75	55	16	-3.8	67	109	26	-4	12	9	15
TOP %	6	14	18	15	17	25	24	42	20	33	10	50

Act BW	Adj WW
80	689

	ADG	YG	CW	REA	MARB	DMI
EPD	0.28	0.19	43	0.09	0.39	1.43
TOP %	19	96	3	59	54	45

This bull has it all- growth, conformation, and the best EPDs of the Redeem sons in nearly every category.

AI SONS OF BIEBER CL STOCKMARKET E119 REG#3751659

These are our first sons out of Stockmarket. We AI'd him to all our yearling heifers and every calf was born unassisted. They show great growth potential based on their high percentage Gridmaster EPDs, and all have very nice dispositions.

307

FM MACKEY STOCKMARKET 307

\$4,500

DOB: 03-31-2023 50% AR 50% RAAA# 4827636 DAM DOB: 04-29-2021

LSF SAGA 1040Y
PIE STOCKMAN 4051
PIE LAKOTA 046
BIEBER CL STOCKMARKET E119
ANDRAS FUSION R236
BIEBER CL ADELLE 475C
BIEBER ADELLE 297Y

	ProS	HB	GM	CED	BW	WW	YW	MILK	ME	HPG	CEM	STAY
EPD	127	29	98	15	-3.5	85	133	21			10	6
TOP %	6	88	1	22	21	1	2	88			6	99

Act BW	Adj WW
85	654

	ADG	YG	CW	REA	MARB	DMI
EPD	0.30	0.25	42	0.28	0.82	
TOP %	8	99	4	22	3	

NOT ON FILE

He is out of a commercial dam; therefore some of the EPD categories are blanked. But don't let that stop you from considering him- he is a good-looking guy all the way around.

308

FM MACKEY STOCKMARKET 308

\$4,500

DOB: 04-04-2023 75% AR 25% RAAA# 4819313 DAM DOB: 04-29-2021

LSF SAGA 1040Y
PIE STOCKMAN 4051
PIE LAKOTA 046
BIEBER CL STOCKMARKET E119
ANDRAS FUSION R236
BIEBER CL ADELLE 475C
BIEBER ADELLE 297Y

	ProS	HB	GM	CED	BW	WW	YW	MILK	ME	HPG	CEM	STAY
EPD	110	27	83	11	-3.1	67	111	23	-6	9	7	10
TOP %	23	93	1	71	26	25	22	70	16	91	57	96

Act BW	Adj WW
86	697

	ADG	YG	CW	REA	MARB	DMI
EPD	0.24	0.24	33	0.25	1.03	1.54
TOP %	44	99	16	25	1	55

LSF NIGHT CALVER 9921W
FM MACKEY NIGHT CALVER 703
FM 1555 *COMMERCIAL DAM SIRE VERIFIED BY RAAA RED NAVIGATOR TO TR NUGGET AT361 #1620742
FM MACKEY 102-1752 * Sire verified by RAAA Red Navigator
1554 *Sire verified to Crump Cutting Edge 289 #1546024

Nice conformation, deep-bodied and balanced, top 1% in the Gridmaster index.

309

FM MACKEY STOCKMARKET 309

\$5,000

DOB: 03-30-2023 75% AR 25% RAAA# 4819315 DAM DOB: 03-31-2021

LSF SAGA 1040Y
PIE STOCKMAN 4051
PIE LAKOTA 046
BIEBER CL STOCKMARKET E119
ANDRAS FUSION R236
BIEBER CL ADELLE 475C
BIEBER ADELLE 297Y
BROWN JYJ REDEMPTION Y1334
LSF SRR REDEEM 4103B
LSF COUNTESS T7211 W9067
FM MACKEY 103-1962
FM MACKEY NIGHT CALVER 703
1962 *Sire verified by RAAA Red Navigator
1084- commercial dam

	ProS	HB	GM	CED	BW	WW	YW	MILK	ME	HPG	CEM	STAY
EPD	114	42	73	16	-4	71	116	25	-2	8	11	11
TOP %	18	76	4	11	14	15	14	59	26	95	2	91

Act BW	Adj WW
82	719

	ADG	YG	CW	REA	MARB	DMI
EPD	0.30	0.28	38	0.24	0.91	1.93
TOP %	10	99	8	26	1	87

Long and thick-bodied, these Stockmarket sons would make a great sire group of bulls, as they are very even and uniform as a group. 309 has excellent all-around high % EPDs.

310

FM MACKEY STOCKMARKET 310

\$5,000

DOB: 03-28-2023 100% AR RAAA# 4819331 DAM DOB: 03-31-2021

LSF SAGA 1040Y
PIE STOCKMAN 4051
PIE LAKOTA 046
BIEBER CL STOCKMARKET E119
ANDRAS FUSION R236
BIEBER CL ADELLE 475C
BIEBER ADELLE 297Y
MESSMER PACKER S008
LSF NIGHT CALVER 9921W
LSF DELLA P4078 U8051
FM MACKEY 1RTR1689 117
BECKTON NEW ERA A332 E2
1RTR1689
RTR 1024

	ProS	HB	GM	CED	BW	WW	YW	MILK	ME	HPG	CEM	STAY
EPD	134	66	68	17	-4.9	67	110	29	4	10	12	15
TOP %	5	28	6	7	7	26	23	21	54	70	1	52

Act BW	Adj WW
83	742

	ADG	YG	CW	REA	MARB	DMI
EPD	0.31	0.11	28	0.39	0.78	1.82
TOP %	7	76	30	9	4	80

This guy will win your heart with his friendly attitude, size, and 2.04 lbs/day gain since weaning when weighed on January 24th. He has the best ProS and calving EPDs of the Stockmarket sons.

We are Beef Quality Assurance Certified.

www.bqa.org

BULL BRED SONS OF FM MACKEY CRMPEXPRESS331 010 REG#4307773

LSF NIGHT CALVER MATERNAL BLOODLINES

These nine yearling bulls are out of Night Calver daughters or his sons. EPDs reflect these excellent genetics. The later calving dates are reflected in some of the lighter weaning weights.

312

FM MACKEY CRMPEXPRESS331 312

\$5,000

DOB: 04-24-2023 100% AR

RAAA# 4819291

DAM DOB: 04-04-2016

MLK CRK EXPRESS 9127
CRUMP EXPRESS 331
MDM VERNICE 16-1
FM MACKEY CRMPEXPRESS331 010
LSF NIGHT CALVER 9921W
LSF SRR FLO-MARIE 961 D6442
SRR FLO-MARIE 961-150
MESSMER PACKER S008
LSF NIGHT CALVER 9921W
LSF DELLA P4078 U8051
LSF SRR FLO-MARIE 961 D6443
BASIN EXT 5233
SRR FLO-MARIE 961-150
SRR FLO-MARIE 150-185

	ProS	HB	GM	CED	BW	WW	YW	MILK	ME	HPG	CEM	STAY
EPD	115	71	44	16	-4.3	64	98	31	1	14	12	14
TOP %	17	19	35	11	11	38	48	8	37	9	1	73

Act BW	Adj WW
88	708

	ADG	YG	CW	REA	MARB	DMI
EPD	0.26	0.12	32	0.21	0.47	1.43
TOP %	27	79	18	32	36	45

His dam and 304's dam are ET daughters out of LSF Night Calver 9921W. A larger framed bull, he's deep and balanced with the good looks of Night Calver bloodlines.

313

FM MACKEY CRMPEXPRESS331 313

\$4,000

DOB: 04-15-2023 100% AR

RAAA# 4819293

DAM DOB: 09-21-2018

MLK CRK EXPRESS 9127
CRUMP EXPRESS 331
MDM VERNICE 16-1
FM MACKEY CRMPEXPRESS331 010
LSF NIGHT CALVER 9921W
LSF SRR FLO-MARIE 961 D6442
SRR FLO-MARIE 961-150
MESSMER PACKER S008
LSF NIGHT CALVER 9921W
LSF DELLA P4078 U8051
FM MACKEY CRMP NGHTCLVER 805
WPRA AVALANCHE 818
CRUMP PLEASURE 616
MDM DONA PRIDE 31-7

	ProS	HB	GM	CED	BW	WW	YW	MILK	ME	HPG	CEM	STAY
EPD	111	79	32	20	-7.9	48	73	29	-1	13	14	16
TOP %	22	10	62	1	1	87	89	21	27	18	1	46

Act BW	Adj WW
70	618

	ADG	YG	CW	REA	MARB	DMI
EPD	0.17	0.13	22	0.13	0.42	1.00
TOP %	86	84	55	49	47	17

Moderately framed, well balanced, and top 1% in Calving Ease Direct EPD.

314

FM MACKEY CRMPEXPRESS331 314

\$4,000

DOB: 05-15-2023 87.5% AR 12.5%

RAAA# 4819295

DAM DOB: 04-04-2019

MLK CRK EXPRESS 9127
CRUMP EXPRESS 331
MDM VERNICE 16-1
FM MACKEY CRMPEXPRESS331 010
LSF NIGHT CALVER 9921W
LSF SRR FLO-MARIE 961 D6442
SRR FLO-MARIE 961-150
LSF NIGHT CALVER 9921W
FM MACKEY NIGHT CALVER 701
FM 1552 *COMMERCIAL DAM SIRE VERIFIED BY RAAA RED NAVIGATOR TO TR NUGGET AT361 #1620742
FM MACKEY CRMP SHO NC701 1917
LSF SAGA 1040Y
CRUMP SHOSHONE 640
CRUMP SHOSHONE 390

	ProS	HB	GM	CED	BW	WW	YW	MILK	ME	HPG	CEM	STAY
EPD	120	85	35	15	-3.6	62	95	28	-2	12	11	17
TOP %	13	6	55	17	19	44	55	32	25	46	2	24

Act BW	Adj WW
90	751

	ADG	YG	CW	REA	MARB	DMI
EPD	0.23	0.11	22	0.11	0.43	1.35
TOP %	47	75	57	53	45	38

Smaller weight and size due to his mid-May calving date, but has great calving ease EPDs and respectable weaning and yearling weight EPDs.



FM MACKEY CRMPEXPRESS331 010
with some his harem in late July 2023

316

FM MACKEY CRMPRESS331 316

\$3,500

DOB: 05-05-2023 100% AR

RAAA# 4819309

DAM DOB: 03-24-2020

MLK CRK EXPRESS 9127
CRUMP EXPRESS 331
MDM VERNICE 16-1
FM MACKEY CRMPRESS331 010
LSF NIGHT CALVER 9921W
LSF SRR FLO-MARIE 961 D6442
SRR FLO-MARIE 961-150
MESSMER PACKER S008
LSF NIGHT CALVER 9921W
LSF DELLA P4078 U8051
FM MACKEY LSF CVR GRL 023
DUNN SLEEP EASY A520
LSF SRR COVR GRL U8087 D6343
LSF COVER GIRL S6089 U8087

	ProS	HB	GM	CED	BW	WW	YW	MILK	ME	HPG	CEM	STAY
EPD	125	81	44	16	-4.5	58	88	26	-3	14	11	16
TOP %	9	9	36	14	10	60	69	44	23	10	3	48

Act BW	Adj WW
82	625

	ADG	YG	CW	REA	MARB	DMI
EPD	0.16	0.07	25	0.24	0.48	0.85
TOP %	88	53	44	26	34	10

Top 9% in the Profitability and Sustainability and Herdbuilder indices, along with good calving ease. Smaller due to May calving date. He is the bargain of the bulls, priced at \$3,500.

319

FM MACKEY CRMPRESS331 319

\$4,500

DOB: 04-16-2023 87.5% AR 12.5%

RAAA# 4819311

DAM DOB: 04-28-2020

MLK CRK EXPRESS 9127
CRUMP EXPRESS 331
MDM VERNICE 16-1
FM MACKEY CRMPRESS331 010
LSF NIGHT CALVER 9921W
LSF SRR FLO-MARIE 961 D6442
SRR FLO-MARIE 961-150
LSF NIGHT CALVER 9921W
FM MACKEY NIGHT CALVER 703
FM 1555 *COMMERCIAL DAM SIRE VERIFIED BY RAAA RED NAVIGATOR TO TR NUGGET AT361 #1620742
FM MACKEY LSF TAM 025
LSF SRR CHRONICLE 3001A
LSF SRR TAM 6029 D6573
SRR HI FIRE 1124-718

	ProS	HB	GM	CED	BW	WW	YW	MILK	ME	HPG	CEM	STAY
EPD	125	69	56	13	-1.7	67	113	26	1	13	7	16
TOP %	9	23	17	53	53	26	18	44	38	20	41	43

Act BW	Adj WW
100	664

	ADG	YG	CW	REA	MARB	DMI
EPD	0.21	0.25	36	-0.08	0.54	1.56
TOP %	62	99	11	90	23	57

Although 319 is not as good in calving ease as we would like to see, he is good-looking, well balanced, and scored high in the ProS, HB, and GM EPDs. He ranked second in gain since weaning, logging 2.11 lbs/day as of January 24th. We normally wouldn't keep a bull with a 100# BW, but he was born unassisted out of a 3 year old cow, so we decided to give him a chance.

320

FM MACKEY CRMPRESS331 320

\$4,000

DOB: 04-13-2023 87.5% AR 12.5%

RAAA# 4819329

DAM DOB: 04-09-2020

MLK CRK EXPRESS 9127
CRUMP EXPRESS 331
MDM VERNICE 16-1
FM MACKEY CRMPRESS331 010
LSF NIGHT CALVER 9921W
LSF SRR FLO-MARIE 961 D6442
SRR FLO-MARIE 961-150
LSF NIGHT CALVER 9921W
FM MACKEY NIGHT CALVER 703
FM 1555 *COMMERCIAL DAM SIRE VERIFIED BY RAAA RED NAVIGATOR TO TR NUGGET AT361 #1620742
FM MACKEY LSF DINA 116
5L QUARTERBACK 1205-5337
LSF SRR DINA T7090 A3015
LSF DINA R5024 T7090

	ProS	HB	GM	CED	BW	WW	YW	MILK	ME	HPG	CEM	STAY
EPD	121	53	68	16	-5.3	63	102	26	3	10	10	14
TOP %	12	54	6	11	5	41	39	50	46	74	4	71

Act BW	Adj WW
72	661

	ADG	YG	CW	REA	MARB	DMI
EPD	0.16	0.21	26	0.17	1	1.73
TOP %	88	98	39	40	1	73

A little more disposition than the rest of the bulls, although there is nothing in his maternal line to give us concern, and his excellent EPDs show good genetic potential.

RED ANGUS FCCP MARKETING PROGRAMS

The Red Angus Feeder Calf Certification Program is the first step in differentiating your cattle to buyers, feedlots and packers.

Experience industry-leading return on investment for just the cost of an ear tag
— with no enrollment fees.

The Red Angus Association of America
Marketing Team offers assistance to
Red Angus bull customers at no charge.

Feeder Calf
Certification Program

- Traceability to at least 50% Red Angus genetics
- Source verified to ranch of origin
- Group age verified

No enrollment fee

RED ANGUS
RANCH TESTED. RANCHER TRUSTED.
RedAngus.org • 940-477-4593

“We have used the Red Angus Association FCCP program for several years. It is a great way to market and add value to your Red Angus sired calves.”

BULL BRED SONS OF FM MACKEY CRMPRESS331 010 REG#4307773

These sons of 010 are out of two LSF Saga 1040Y daughters and a daughter of 5L Genuine.
These dams have been great producers and provide outcross bloodlines.

311 FM MACKEY CRMPRESS331 311 \$4,500

DOB: 04-19-2023 100% AR RAAA# 4819281 DAM DOB: 01-08-2016

MLK CRK EXPRESS 9127
CRUMP EXPRESS 331
MDM VERNICE 16-1
FM MACKEY CRMPRESS331 010
LSF NIGHT CALVER 9921W
LSF SRR FLO-MARIE 961 D6442
SRR FLO-MARIE 961-150
BECKTON EPIC R397 K
LSF SAGA 1040Y
LSF MINOLA T7172 W9041
CRUMP VIRTUE 6602
BUF CRK LANCER R017
BUF CRK PRIMROSE U021
BUF CRK PRIMROSE S035

	ProS	HB	GM	CED	BW	WW	YW	MILK	ME	HPG	CEM	STAY
EPD	100	73	27	14	-3.4	65	99	24	-1	13	9	15
TOP %	38	17	72	37	22	33	46	66	28	21	13	50

Act BW	Adj WW
92	673

	ADG	YG	CW	REA	MARB	DMI
EPD	0.26	0.11	18	0.08	0.4	1.23
TOP %	30	74	72	60	52	29

Deep and thick bodied, a good moderate bull in every category.

318 FM MACKEY CRMPRESS331 318 \$4,500

DOB: 04-17-2023 100% AR RAAA# 4819277 DAM DOB: 02-03-2016

MLK CRK EXPRESS 9127
CRUMP EXPRESS 331
MDM VERNICE 16-1
FM MACKEY CRMPRESS331 010
LSF NIGHT CALVER 9921W
LSF SRR FLO-MARIE 961 D6442
SRR FLO-MARIE 961-150
BECKTON EPIC R397 K
LSF SAGA 1040Y
LSF MINOLA T7172 W9041
CRUMP NEXA 672
MDM HILO 14
MDM NEXA 788
MDM NEXA 585

	ProS	HB	GM	CED	BW	WW	YW	MILK	ME	HPG	CEM	STAY
EPD	113	83	31	13	-2.8	60	98	32	4	11	9	19
TOP %	19	7	65	42	32	51	48	6	56	54	17	10

Act BW	Adj WW
88	715

	ADG	YG	CW	REA	MARB	DMI
EPD	0.22	0.12	22	0.17	0.33	1.50
TOP %	58	80	54	40	70	52

Although 318's CED isn't ideal, his dam has calved unassisted every year, raised twins in 2019 with no supplemental feed, and both daughters are in our maternal herd. Daughter 919 is dam of Lot 305.

303 FM MACKEY CRMPRESS331 303 \$4,000

DOB: 04-06-2023 100% AR RAAA# 4819301 DAM DOB: 04-01-2019

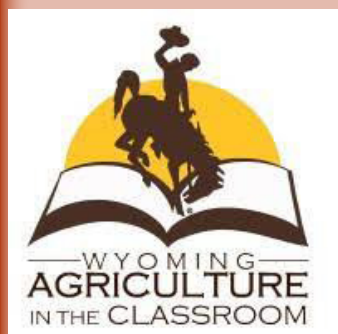
MLK CRK EXPRESS 9127
CRUMP EXPRESS 331
MDM VERNICE 16-1
FM MACKEY CRMPRESS331 010
LSF NIGHT CALVER 9921W
LSF SRR FLO-MARIE 961 D6442
SRR FLO-MARIE 961-150
5L GENUINE 99-85Y
5L GENUINE 1603-195C
5L RUBY 21-1603
FM MACKEY EVERGRN 5LGEN 1922
5L INDEPENDENCE 560-298Y
LSF SRR EVERGRN X0202 D6062
LSF EVERGREEN 19J X0202

	ProS	HB	GM	CED	BW	WW	YW	MILK	ME	HPG	CEM	STAY
EPD	127	72	55	15	-4.1	56	91	35	7	14	11	16
TOP %	8	18	18	21	13	67	63	1	71	13	2	46

Act BW	Adj WW
82	645

	ADG	YG	CW	REA	MARB	DMI
EPD	0.13	0.09	23	0.09	0.68	1.43
TOP %	96	66	52	59	9	45

Balanced with high ranking EPDs.



At FM Red Angus, we strongly believe in the importance of educating the next generation about agriculture and our Wyoming industries and resources.

Wyoming Ag in The Classroom has developed their amazing Wyo Wonders curriculum which meets the education standards teachers are required to meet in social studies and science, enabling them to educate students in these areas using agriculture, energy, and outdoor recreation as the means to do so. Check out their website, www.waitc.org and www.wyowonders.org to learn more about the great work they are doing.



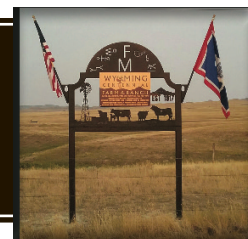
CONTACT US:

House 307-686-9091

Dudley 307-680-4401

Marilyn 307-680-2102

REFERENCE SIRES



LSF NIGHT CALVER 9921W

LSF NIGHT CALVER 9921W

REG # 1368797

	ProS	HB	GM	CED	BW	WW	YW	MILK	ME	HPG	CEM	STAY
EPD	169	111	58	17	-6.6	70	115	32	0	22	12	17
TOP %	1	1	19	9	2	26	25	11	29	1	1	28

Act BW	Adj WW
65	687

	ADG	YG	CW	REA	MARB	DMI
EPD	0.28	0.12	37	0.52	0.44	1.17
TOP %	25	68	16	8	45	23



LSF PROSPECT 2035Z

LSF PROSPECT 2035Z

REG # 1547645

	ProS	HB	GM	CED	BW	WW	YW	MILK	ME	HPG	CEM	STAY
EPD	134	106	28	15	-4.7	62	104	38	6	15	11	20
TOP %	8	1	64	22	10	53	44	1	60	12	5	6

Act BW	Adj WW
72	713

	ADG	YG	CW	REA	MARB	DMI
EPD	0.26	0.16	18	0.13	0.34	1.41
TOP %	33	83	68	48	64	40



REDEEM 4103B DAUGHTER

LSF SRR REDEEM 4103B

REG # 1682142

	ProS	HB	GM	CED	BW	WW	YW	MILK	ME	HPG	CEM	STAY
EPD	103	68	35	15	-3.4	72	118	27	3	11	9	16
TOP %	30	22	51	24	24	21	20	41	43	56	16	38

Act BW	Adj WW
78	604

	ADG	YG	CW	REA	MARB	DMI
EPD	0.28	0.21	40	-0.08	0.28	1.68
TOP %	23	93	12	85	75	63



BIEBER STOCKMARKET E119

BIEBER STOCKMARKET E119

REG # 3751659

	ProS	HB	GM	CED	BW	WW	YW	MILK	ME	HPG	CEM	STAY
EPD	124	57	67	16	-4.9	79	134	23	12	16	12	12
TOP %	12	39	11	13	9	9	6	72	87	9	2	74

Act BW	Adj WW
64	640

	ADG	YG	CW	REA	MARB	DMI
EPD	0.34	0.16	23	0.30	1.22	2.66
TOP %	6	82	54	23	1	99



FM MACKEY CRMPEXPRESS331 010

FM MACKEY CRMPEXPRESS331 010

REG # 4307773

	ProS	HB	GM	CED	BW	WW	YW	MILK	ME	HPG	CEM	STAY
EPD	96	75	21	17	-5.5	57	80	26	-4	14	12	14
TOP %	39	15	75	11	5	71	84	45	16	24	3	54

Act BW	Adj WW
80	730

	ADG	YG	CW	REA	MARB	DMI
EPD	0.15	0.09	15	-0.02	0.40	1.01
TOP %	92	59	77	76	53	15



REGISTERED COWS
MARCH 1, 2023

BULLS BRED AND RAISED FOR PROFITABILITY

Thank you to our vets, Drs. Jay and Brandi Hudson, Lazy H Large Animal Services, LLC. Your services and expertise have been top notch and invaluable!



Thank You to our Customers!



Eric & Kelly Barlow

Gerry & Gwen Geis

Britt & Dan Swaney

Doug & Susie Carr

Danny Lanning

Leroy Curren

Justin & Mandy Holcomb

Henry Pagel

Ryan & Ann Huxtable

Jake & Brittany Anderson

Christian & Cassie Holland

P Cross Bar Ranch

Antonette Curren

Justin & Trinity Lewis

Bill Blauer

Eda Reno, Sioux Ranch Inc

We really appreciate how FM Red Angus develops their bulls. The proof is in the pudding, as we've heard from multiple clients who have purchased Mackey bulls these past few years... 'We will be repeat buyers because their bulls hold up'; 'I like how the Mackeys don't ruin their bulls with grain and they grow into big masculine bulls that stick around year after year'; 'My Mackey bulls have stayed sound and they produce nice vigorous calves.'
There isn't anything better we veterinarians could say, because happy customers say it best."

Drs. Jay and Brandi Hudson

Lazy H Large Animal Services





*May the road rise to meet you.
May the wind be always at your back.
May the sun shine warm upon your face.
May the rains fall soft upon your pastures.
And, until we meet again,
May God hold you in the hollow of His hand.
Irish blessing*

FM Red Angus

www.fmredangus.com

www.Facebook.com/FMRedAngus

fmredangus@vcn.com

Designed by Amity Kissack