

**PRIVATE TREATY
BULLS FOR SALE**

FM RED ANGUS

Dudley & Marilyn Mackey
8466 N. Hwy. 14-16
Gillette WY 82716
307.686.9091

**REGISTERED
RED ANGUS**

Dudley cell-307.680.4401 Marilyn cell-307.680.2102

Email: fmredangus@vcn.com Website www.fmredangus.com

2024 was a year of many challenges, from a wildfire season that most people have never seen in their lifetime, a hot dry summer, an unusual election year, but thankfully, great calf prices and the opportunity to see the goodness and generosity of so many friends and neighbors helping those impacted by the wildfires.

This 2025 offering of yearling bulls has a number of great statistics to bring to you.

- 100% calved unassisted
- Zero treatment for sickness from birth to now.
- Raised with no supplemental feed prior to weaning after a very hot, dry summer

We had a great breed up this year, with the mature registered herd 97% bred and yearling registered heifers 100% bred over a 48 day breeding period. Our commercial cows preg tested at 96% with a 58 day breeding period and the commercial yearling heifers tested 91% bred with a 43 day breeding period. We feel this represents great fertility on the maternal side along with semen quality and fertility on the bull side, all of whom are home raised.

All calves born through our calving facility receive an Alpha CD shot at birth. Our shot protocols following birth are Pyramid 5 w/Presponse and Ultrabac 7 w/Somubac at branding and weaning. All bulls and bull calves receive Virashield 6 VL5HB at the breeding soundness exam by Drs. Jay and Brandi Hudson, typically in April.

Registered bull and heifer calves are DNA tested, sire and dam verified with the GGD-LD test post weaning. Commercial heifers are sire verified and genetically ranked through the Commercial Ingenity Beef test with the Red Angus Association. This helps us see how our home raised bulls are performing in the commercial cow herd.

We prioritize a good mineral program for all cattle, feed little supplemental feed in normal weather conditions except to add a protein supplement a couple of months prior to calving to ensure strong, healthy cows and calves when they hit the ground. We calve in April and May and cull for udders, feet, disposition and calving difficulties which are quite rare, thanks to years of extensive record keeping on the maternal herd.

The bull calves are developed on high quality hay, an 18% protein cake, and a good mineral program for high fertility, and longevity. Our goal is to have them range-fit and ready to go to work, not show-steer fat. They will be ready to go to their new home sometime around mid-April, depending on availability of our vets to get them tested as well as the weather and your needs. We invite you to come and look at them at any time and choose your purchase. Please call if you have any questions or need more information.

We look forward to hearing from you!

Dudley & Marilyn



RED ANGUS GUIDE TO EPDS

RedAngus.org

ProS..... Profitability and Sustainability is an all-purpose index that predicts average economic differences in all segments in the beef supply chain. This index is a combination of the breeding objectives modeled in the HerdBuilder and GridMaster selection indexes. In this index, replacement heifers are retained from within the herd and all remaining progeny are fed out to slaughter and sold on a quality-based grid. Traits included in this index include calving ease, growth, HPG, STAY, Mature Weight, Dry Matter Intake and carcass traits. The resulting index is expressed in dollars per head born (Index/High Value).

HB HerdBuilder is a maternal selection index that predicts the economic differences of animals for traits that are important from conception through weaning. Expressed as dollars per head born, HB is calculated based on the scenario that bulls are mated to heifers and cows, replacement heifers are retained and all remaining progeny are marketed at weaning. Traits included in the HB index include Calving Ease Direct, Calving Ease Maternal, Weaning Weight, Milk, Mature Weight, Heifer Pregnancy and Stayability (Index/High Value).

GM GridMaster is a selection index that predicts the average economic difference of non-replacement calves through the post-weaning phase of production. GM places selection pressure on growth, feedyard performance and carcass traits. Expressed as dollars per head born, GM is calculated based on the scenario that progeny are fed out to slaughter and marketed on a quality-based carcass grid. Traits included in GM include Average Daily Gain, Carcass Weight, Dry Matter Intake, Marbling, Back Fat and Rib Eye Area (Index/High Value).

CED Calving Ease Direct predicts differences in the percent of calves born unassisted out of 2-year-old dams. (Percent/High Value)

BW Birth Weight predicts differences in actual birth weight of progeny. (Pounds/Low Value)

WW Weaning Weight predicts differences in 205-day weaning weight. (Pounds/High Value)

YW Yearling Weight predicts differences in 365-day yearling weight. (Pounds/High Value)

ADG Average Daily Gain predicts differences in weight gain between 205 and 365 days of age. (Pounds/High Value)

DMI Dry Matter Intake predicts differences in daily feed intake as measured in a feedlot during the post-weaning period. (Pounds/Low Value)

MILK Milk predicts differences in weaning weight attributed to the milking ability of the animal's daughters. (Pounds/High Value)

ME Maintenance Energy predicts the difference in maintenance energy requirements. (Mcal per Month/Low Value)

HPG Heifer Pregnancy predicts differences in the percent of daughters who are able to conceive and calve at 2 years of age following exposure to breeding. (Percent/High Value)

CEM Calving Ease Maternal predicts differences in the percent of daughters who are able to calve unassisted as 2-year-old heifers. (Percent/High Value)

STAY Stayability predicts differences in the ability of an animals' retained daughters to remain productive in the herd – calve every year – through 6 years of age. (Percent/High Value)

MARB Marbling predicts differences in marbling score – amount of intramuscular fat measured at the 13th rib. (Marbling Score Units/High Value)

YG Yield Grade predicts differences in USDA Yield Grade, which is calculated using CW, REA and Fat. (Yield Grade Units/Low Value)

CW Carcass Weight predicts differences in actual hot carcass weight. (Pounds/High Value)

REA Ribeye Area predicts differences in square inches of ribeye area measured at the 13th rib. (Square Inches/High Value)

FAT Fat predicts differences in the depth of backfat measured between the 12th and 13th ribs. (Inches/Low Value)



REGISTERED CALVES WEANED OCTOBER 12, 2024

ASK ABOUT VOLUME DISCOUNTS ON ALL BULL PURCHASES!!

AI SONS OF LSF PROSPECT 2035Z REG #1547645

We only have one bull out of this son of LSF Night Calver 9921W for sale this year. Prospect has shown the same great genetic potential, great body conformation, and top EPDs as his sire.



401

FM MACKEY PROSPECT 401

\$5,000

DOB: 04/02/2024 100% AR

RAAA# 4980297

DAM DOB: 03/13/2022

MESSMER PACKER S008

LSF NIGHT CALVER 9921W

LSF DELLA P4078 U8051

LSF PROSPECT 2035Z

BIEBER ROMERO 9136

LSF BLACKBIRD N3080 X0406

LSF BLACKBIRD 4055 N3080

BECKTON ACCENT A243 N3

KDCS ANDY 907

KDCS SIERRA MIST 329

KDCS ALECIA 208

CALVO JULIAN 56A

AXTELL BLOCKANNA 537-979

AXTELL BLOCKANNA 845-537

	ProS	HB	GM	CED	BW	WW	YW	MILK	ME	HPG	CEM	STAY
EPD	120	99	31	19	-5	61	0	30	2	15	11	18
TOP %	27	3	88	1	6	67	62	12	41	11	1	12

Act BW	Adj WW
73	727

	ADG	YG	CW	REA	MARB	DMI
EPD	0.24	0.22	11	0.16	0.31	0.24
TOP %	54	98	88	95	79	7

We purchased his mother as a yearling heifer from Sheaman Ranch out of Fort Collins to introduce some outcross genetics in our registered herd. He is a moderate frame and size with good growth potential and in the top 1% for calving ease.



GATHERING FOR AI PROTOCOLS, JUNE 17, 2024



At FM Red Angus, we strongly believe in the importance of educating the next generation about agriculture and our Wyoming industries and resources.

Wyoming Ag in The Classroom has developed their amazing **Wyo Wonders** curriculum, which meets the education standards teachers are required to meet in social studies and science, enabling them to educate students in these areas using agriculture, energy, and outdoor recreation as the means to do so. Check out their websites, www.waitc.org and www.wyowonders.org to learn more about the great work they are doing.

WYO WONDERS

A Wyoming-focused Curriculum for Elementary Education

AI SONS OF LSF SRR REDEEM 4103B REG #1682142

These two sons of Redeem score in the top 10-25% in nearly all EPDs across the board. Both dams are out of our 703, an AI son of Night Calver who remained sound and gentle until sold as a 6 year-old.

408 FM MACKEY REDEEM 408 \$5,000

DOB: 03/30/2024 87.5% AR 12.5% RAAA# 4980315 DAM DOB: 04/28/2020

BECKTON NEBULA P P707
BROWN JYJ REDEMPTION Y1334
JYJ MS JOLENE W16
LSF SRR REDEEM 4103B
MESSMER PACKER S008
LSF COUNTESS T7211 W9067
LSF COUNTESS K1490 T7211

LSF NIGHT CALVER 9921W
FM MACKEY NIGHT CALVER 703
NOT ON FILE
FM MACKEY LSF FLO-MARIE 022
BROWN JYJ REDEMPTION Y1334
LSF SRR FLOMARIE B4341 D6161
LSF SRR FLO MARIE B4341

	ProS	HB	GM	CED	BW	WW	YW	MILK	ME	HPG	CEM	STAY
EPD	139	68	71	15	-3.9	70	114	25	-1	12	9	15
TOP %	9	21	15	21	16	31	30	64	27	34	18	46

Act BW	Adj WW
87	753

	ADG	YG	CW	REA	MARB	DMI
EPD	0.27	0.28	54	0.09	0.45	0.89
TOP %	30	99	1	62	43	70

He is Dudley's top pick of all our bulls this year for conformation. His EPDs and rate of gain show the ability to add \$\$ to your calf crop.

409 FM MACKEY REDEEM 409 \$4,500

DOB: 04/05/2024 87.5% AR 12.5% RAAA# 4980317 DAM DOB: 04/28/2020

BECKTON NEBULA P P707
BROWN JYJ REDEMPTION Y1334
JYJ MS JOLENE W16
LSF SRR REDEEM 4103B
MESSMER PACKER S008
LSF COUNTESS T7211 W9067
LSF COUNTESS K1490 T7211

LSF NIGHT CALVER 9921W
FM MACKEY NIGHT CALVER 703
NOT ON FILE
FM MACKEY LSF TAM 025
LSF SRR CHRONICLE 3001A
LSF SRR TAM 6029 D6573
SRR HI FIRE 1124-718

	ProS	HB	GM	CED	BW	WW	YW	MILK	ME	HPG	CEM	STAY
EPD	119	66	63	14	-2.5	74	128	25	5	13	8	16
TOP %	28	24	44	39	37	19	10	55	55	25	36	34

Act BW	Adj WW
94	801

	ADG	YG	CW	REA	MARB	DMI
EPD	0.34	0.21	35	0.06	0.37	1.22
TOP %	5	98	14	87	67	93

A little higher actual birthweight but still in the top 40% for calving ease and was born unassisted out of a two year-old heifer.



703- SIRE OF 408 AND 409 DAMS
Photo taken September 2021 post breeding season.

We are



certified.

www.bqa.org

AI SONS OF BIEBER CL STOCKMARKET E119 REG#3751659

This is our second crop of Stockmarket bull calves, and he brings great outcross genetics to our maternal herd.

404 & 407 are out of LSF Night Calver 9921W AI daughters.

404

FM MACKEY STOCKMARKET 404

\$4,500

DOB: 03/31/2024 100% AR

RAAA# 4980305

DAM DOB: 03/21/2018

LSF SAGA 1040Y
PIE STOCKMAN 4051
PIE LAKOTA 046
BIEBER CL STOCKMARKET E119
ANDRAS FUSION R236
BIEBER CL ADELLE 475C
BIEBER ADELLE 297Y
MESSMER PACKER S008
LSF NIGHT CALVER 9921W
MESSMER MILLIE 124P
FM MACKEY CRMP NGHTCLVER 805
WPRA AVALANCHE 818
CRUMP PLEASURE 616
MDM DONA PRIDE 31-7

	ProS	HB	GM	CED	BW	WW	YW	MILK	ME	HPG	CEM	STAY
EPD	152	84	1	23	-9.1	54	85	28	4	13	15	17
TOP %	3	5	19	1	1	88	86	32	51	25	1	18

Act BW	Adj WW
76	765

	ADG	YG	CW	REA	MARB	DMI
EPD	0.19	0.19	9	0.04	0.91	0.25
TOP %	81	96	91	71	2	7

Top percentage EPDs for calving ease and maternal genetics. He is a little smaller and rate of gain on the lower end of his bunk mates. His six year-old dam was the only dry we had this year in our registered herd.

407

FM MACKEY STOCKMARKET 407

\$5,000

DOB: 03/29/2024 100% AR

RAAA# 4980313

DAM DOB: 03/25/2020

LSF SAGA 1040Y
PIE STOCKMAN 4051
PIE LAKOTA 046
BIEBER CL STOCKMARKET E119
ANDRAS FUSION R236
BIEBER CL ADELLE 475C
BIEBER ADELLE 297Y
MESSMER PACKER S008
LSF NIGHT CALVER 9921W
LSF DELLA P4078 U8051
FM MACKEY CRMP PLEASURE 020
WPRA AVALANCHE 818
CRUMP PLEASURE 616
MDM DONA PRIDE 31-7

	ProS	HB	GM	CED	BW	WW	YW	MILK	ME	HPG	CEM	STAY
EPD	189	114	76	22	-7.1	72	122	28	2	14	15	20
TOP %	1	1	10	1	1	25	16	31	42	13	1	2

Act BW	Adj WW
64	744

	ADG	YG	CW	REA	MARB	DMI
EPD	0.31	0.25	26	0.17	0.87	1.05
TOP %	10	99	45	44	3	84

You can't get much better than his EPD % for outstanding genetic potential, along with size and rate of gain.



Dam of 407 as a 3 year-old, March of 2023, the first cow to calve.

AI SONS OF BIEBER CL STOCKMARKET E119 REG#3751659

This is our second crop of Stockmarket bull calves, and he brings great outcross genetics to our maternal herd.

Dams of 410, 411, and 412 are out of sons of LSF Night Calver 9921W.

410

FM MACKEY STOCKMARKET 410

\$4,000

DOB: 04/08/2024 100% AR

RAAA# 4980323

DAM DOB: 03/27/2021

LSF SAGA 1040Y
PIE STOCKMAN 4051
PIE LAKOTA 046
BIEBER CL STOCKMARKET E119
ANDRAS FUSION R236
BIEBER CL ADELLE 475C
BIEBER ADELLE 297Y
LSF NIGHT CALVER 9921W
LSF PROSPECT 2035Z
LSF BLACKBIRD N3080 X0406
FM MACKEY LSF EVERGREEN 107
5L GENUINE 1603-195C
FM MACKEY EVERGRN 5LGEN 1922
LSF SRR EVERGRN X0202 D6062

	ProS	HB	GM	CED	BW	WW	YW	MILK	ME	HPG	CEM	STAY
EPD	138	57	81	13	-1.8	80	130	31	8	13	10	13
TOP %	10	41	7	54	49	8	8	10	75	22	9	69

Act BW	Adj WW
95	851

	ADG	YG	CW	REA	MARB	DMI
EPD	0.31	0.15	30	0.21	0.9	1.09
TOP %	11	90	25	36	2	86

Good rate of gain and top 10% in Profitability & Sustainability and Gridmaster indexes.

411

FM MACKEY STOCKMARKET 411

\$4,500

DOB: 04/02/2024 100% AR

RAAA# 4980327

DAM DOB: 04/01/2021

LSF SAGA 1040Y
PIE STOCKMAN 4051
PIE LAKOTA 046
BIEBER CL STOCKMARKET E119
ANDRAS FUSION R236
BIEBER CL ADELLE 475C
BIEBER ADELLE 297Y
LSF NIGHT CALVER 9921W
LSF PROSPECT 2035Z
LSF BLACKBIRD N3080 X0406
FM MACKEY LSF SRRFLOMARIE110
BROWN JYJ REDEMPTION Y1334
LSF SRR FLOMARIE B4341 D6161
LSF SRR FLO MARIE B4341

	ProS	HB	GM	CED	BW	WW	YW	MILK	ME	HPG	CEM	STAY
EPD	146	66	79	15	-4.9	70	116	30	7	12	10	16
TOP %	6	23	8	18	7	31	24	14	69	34	5	37

Act BW	Adj WW
85	824

	ADG	YG	CW	REA	MARB	DMI
EPD	0.29	0.09	24	0.2	0.81	0.87
TOP %	19	68	49	38	5	68

Great size, rate of gain combined with calving ease and in the top 25% or less in all three indexes.

412

FM MACKEY STOCKMARKET 412

\$4,000

DOB: 04/03/2024 100% AR

RAAA# 4980329

DAM DOB: 03/25/2021

LSF SAGA 1040Y
PIE STOCKMAN 4051
PIE LAKOTA 046
BIEBER CL STOCKMARKET E119
ANDRAS FUSION R236
BIEBER CL ADELLE 475C
BIEBER ADELLE 297Y
LSF NIGHT CALVER 9921W
FM MACKEY NIGHTCALVER 801
1RTR1689
FM MACKEY LSF SRR DELLA 111
LSF HERDBUILDER 1058Y
LSF SRR DELLA Y1089 D6405
LSF DELLA U8077 Y1089

	ProS	HB	GM	CED	BW	WW	YW	MILK	ME	HPG	CEM	STAY
EPD	151	61	89	10	-2.4	65	109	28	4	15	8	15
TOP %	4	33	3	82	39	53	39	26	54	11	38	51

Act BW	Adj WW
94	710

	ADG	YG	CW	REA	MARB	DMI
EPD	0.28	0.09	26	0.28	1	1.05
TOP %	27	66	43	25	1	84

Calving ease and birthweight are a little higher than we would recommend for breeding to yearling heifers.

"We have used the Red Angus Association FCCP program for several years. It is a great way to market and add value to your Red Angus sired calves."

RED ANGUS FCCP MARKETING PROGRAMS

The Red Angus Feeder Calf Certification Program is the first step in differentiating your cattle to buyers, feedlots and packers.

Experience industry-leading return on investment for just the cost of an ear tag - with no enrollment fees.

The Red Angus Association of America Marketing Team offers assistance to Red Angus bull customers at no charge.

Feeder Calf Certification Program

- Traceability to at least 50% Red Angus genetics
- Source verified to ranch of origin
- Group age verified

No enrollment fee

GENETICS
SOURCE • AGE

RED ANGUS
RANCH TESTED. RANCHER TRUSTED.
RedAngus.org • 940-477-4593



BULL BRED SONS OF FM MACKEY CRMPEXPRESS331 010 REG#4307773

010 continues to be an outstanding herd bull; he is a prolific breeder with a good disposition and sound feet.

422 FM MACKEY CRMPEXPRESS331 422 \$4,500

DOB: 04/07/2024 100% AR RAAA# 4980303 DAM DOB: 04/04/2016

MLK CRK EXPRESS 9127
CRUMP EXPRESS 331
MDM VERNICE 16-1
FM MACKEY CRMPEXPRESS331 010
LSF NIGHT CALVER 9921W
LSF SRR FLO-MARIE 961 D6442
SRR FLO-MARIE 961-150
MESSMER PACKER S008
LSF NIGHT CALVER 9921W
LSF DELLA P4078 U8051
LSF SRR FLO-MARIE 961 D6443
BASIN EXT 5233
SRR FLO-MARIE 961-150
SRR FLO-MARIE 150-185

	ProS	HB	GM	CED	BW	WW	YW	MILK	ME	HPG	CEM	STAY
EPD	116	64	52	14	-3.1	71	106	31	1	13	11	13
TOP %	33	28	49	31	26	30	46	9	34	22	3	72

Act BW	Adj WW
85	734

	ADG	YG	CW	REA	MARB	DMI
EPD	0.22	0.15	32	0.07	0.46	0.68
TOP %	67	88	19	65	41	45

A well balanced 010 son out of an 8 year-old Night Calver daughter. She has raised several bull calves for us.

405, 413, and 414 dams are daughters out of AI sons of LSF Night Calver 9921W.

405 FM MACKEY CRMPEXPRESS331 405 \$4,500

DOB: 04/11/2024 87.5% AR 12.5% RAAA# 4980307 DAM DOB: 04/11/2019

MLK CRK EXPRESS 9127
CRUMP EXPRESS 331
MDM VERNICE 16-1
FM MACKEY CRMPEXPRESS331 010
LSF NIGHT CALVER 9921W
LSF SRR FLO-MARIE 961 D6442
SRR FLO-MARIE 961-150
LSF NIGHT CALVER 9921W
FM MACKEY NIGHT CALVER 701
NOT ON FILE
FM MACKEY CRNEXA NC701 1918
LSF SAGA 1040Y
CRUMP NEXA 672
MDM NEXA 788

	ProS	HB	GM	CED	BW	WW	YW	MILK	ME	HPG	CEM	STAY
EPD	106	71	35	18	-4.3	58	87	24	-4	12	12	15
TOP %	46	16	83	3	11	77	84	66	20	50	1	47

Act BW	Adj WW
81	722

	ADG	YG	CW	REA	MARB	DMI
EPD	0.18	0.11	7	0.09	0.42	0.07
TOP %	88	76	94	62	49	3

A good heifer bull with top 3% Calving Ease and top 1% Calving Ease Maternal EPDs.

413 FM MACKEY CRMPEXPRESS331 413 \$4,000

DOB: 04/17/2024 87.5% AR 12.5% RAAA# 4980331 DAM DOB: 04/14/2021

MLK CRK EXPRESS 9127
CRUMP EXPRESS 331
MDM VERNICE 16-1
FM MACKEY CRMPEXPRESS331 010
LSF NIGHT CALVER 9921W
LSF SRR FLO-MARIE 961 D6442
SRR FLO-MARIE 961-150
LSF NIGHT CALVER 9921W
FM MACKEY NIGHT CALVER 703
NOT ON FILE
FM MACKEY 1RTR1634 115
ANDRAS FUSION R236
1RTR1634
RTR Y35

	ProS	HB	GM	CED	BW	WW	YW	MILK	ME	HPG	CEM	STAY
EPD	142	87	55	15	-3.3	57	87	25	-5	12	10	18
TOP %	7	4	41	23	23	81	83	56	17	38	9	14

Act BW	Adj WW
89	752

	ADG	YG	CW	REA	MARB	DMI
EPD	0.19	0.05	10	0.07	0.63	0.26
TOP %	84	45	91	65	16	8

A little smaller than his contemporaries due to the later calving date. Excellent EPD % in the maternal genetics for Calving Ease, Herd Builder, and Profitability & Sustainability.

414 FM MACKEY CRMPEXPRESS331 414 \$4,000

DOB: 04/05/2024 87.5% AR 12.5% RAAA# 4980333 DAM DOB: 04/09/2020

MLK CRK EXPRESS 9127
CRUMP EXPRESS 331
MDM VERNICE 16-1
FM MACKEY CRMPEXPRESS331 010
LSF NIGHT CALVER 9921W
LSF SRR FLO-MARIE 961 D6442
SRR FLO-MARIE 961-150
LSF NIGHT CALVER 9921W
FM MACKEY NIGHT CALVER 703
NOT ON FILE
FM MACKEY LSF SRR DINA 116
5L QUARTERBACK 1205-5337
LSF SRR DINA T7090 A3015
LSF DINA R5024 T7090

	ProS	HB	GM	CED	BW	WW	YW	MILK	ME	HPG	CEM	STAY
EPD	128	92	36	16	-6.7	58	87	28	-4	14	10	18
TOP %	18	2	81	16	1	78	84	32	20	14	8	12

Act BW	Adj WW
80	787

	ADG	YG	CW	REA	MARB	DMI
EPD	0.18	0.14	10	0.11	0.56	0.72
TOP %	87	85	90	58	24	50

More high-percentage EPDs in maternal genetics if you are looking for several bulls to breed uniformity in your heifers.

"We appreciate how Mackeys develop their yearling bulls for longevity. The fact that they don't overfeed them results in better semen quality, health and function." - Drs. Jay & Brandi Hudson

BULL BRED SONS OF FM MACKEY CRMPEXPRESS331 010 REG#4307773

Several great bloodlines in these four sons of 010, all with moderate EPDs across the board.



403

FM MACKEY CRMPEXPRESS331 403

\$4,500

DOB: 04/02/2024 100% AR RAAA# 4980301 DAM DOB: 04/07/2015

MLK CRK EXPRESS 9127
CRUMP EXPRESS 331
MDM VERNICE 16-1
FM MACKEY CRMPEXPRESS331 010
LSF NIGHT CALVER 9921W
LSF SRR FLO-MARIE 961 D6442
SRR FLO-MARIE 961-150
BECKTON NEBULA P P707
BROWN JYJ REDEMPTION Y1334
JYJ MS JOLENE W16
LSF SRR WIDELOAD C5464
MESSMER PACKER S008
LSF WIDELOAD R5014 U8061
LSF WIDELOAD N3195 R5014

	ProS	HB	GM	CED	BW	WW	YW	MILK	ME	HPG	CEM	STAY
EPD	136	72	64	13	-3.6	57	87	22	1	13	8	17
TOP %	11	15	25	47	19	81	84	87	35	27	27	21

Act BW	Adj WW
96	714

	ADG	YG	CW	REA	MARB	DMI
EPD	0.19	0.13	14	-0.18	0.77	0.3
TOP %	85	84	83	96	6	10

His dam is a larger framed 9 year-old cow. He is thick-bodied and well balanced.

406

FM MACKEY CRMPEXPRESS331 406

\$4,500

DOB: 04/07/2024 100% AR RAAA# 4980309 DAM DOB: 04/01/2019

MLK CRK EXPRESS 9127
CRUMP EXPRESS 331
MDM VERNICE 16-1
FM MACKEY CRMPEXPRESS331 010
LSF NIGHT CALVER 9921W
LSF SRR FLO-MARIE 961 D6442
SRR FLO-MARIE 961-150
5L GENUINE 99-85Y
5L GENUINE 1603-195C
5L RUBY 21-1603
FM MACKEY EVERGRN 5LGEN 1922
5L INDEPENDENCE 560-298Y
LSF SRR EVERGRN X0202 D6062
LSF EVERGREEN 19J X0202

	ProS	HB	GM	CED	BW	WW	YW	MILK	ME	HPG	CEM	STAY
EPD	122	50	73	14	-2.3	65	102	29	3	12	9	13
TOP %	24	56	13	39	41	53	57	21	48	37	11	76

Act BW	Adj WW
95	815

	ADG	YG	CW	REA	MARB	DMI
EPD	0.23	0.03	16	-0.01	0.82	0.51
TOP %	61	33	77	81	4	25

The bloodlines of 5L Genuine have shown great growth and size potential.

415

FM MACKEY CRMPEXPRESS331 415

\$4,000

DOB: 04/13/2024 100% AR RAAA# 4980335 DAM DOB: 03/29/2022

MLK CRK EXPRESS 9127
CRUMP EXPRESS 331
MDM VERNICE 16-1
FM MACKEY CRMPEXPRESS331 010
LSF NIGHT CALVER 9921W
LSF SRR FLO-MARIE 961 D6442
SRR FLO-MARIE 961-150
LSF NIGHT CALVER 9921W
LSF PROSPECT 2035Z
LSF BLACKBIRD N3080 X0406
FM MACKEY 217-920
LSF SRR PREEMINENT 5000C
FM MACKEY HI FIRE PRE 1920
LSF SRR HI FIRE B4381

	ProS	HB	GM	CED	BW	WW	YW	MILK	ME	HPG	CEM	STAY
EPD	125	72	52	14	-2.3	65	99	25	-1	12	10	15
TOP %	21	15	47	35	41	51	63	55	26	35	8	43

Act BW	Adj WW
89	731

	ADG	YG	CW	REA	MARB	DMI
EPD	0.21	0.08	0.25	0.12	0.57	0.91
TOP %	73	62	47	54	22	72

Out of an AI two year-old daughter of LSF Prospect 2035Z.

416

FM MACKEY CRMPEXPRESS331 416

\$4,000

DOB: 04/28/2024 100% AR RAAA# 4980339 DAM DOB: 03/26/2022

MLK CRK EXPRESS 9127
CRUMP EXPRESS 331
MDM VERNICE 16-1
FM MACKEY CRMPEXPRESS331 010
LSF NIGHT CALVER 9921W
LSF SRR FLO-MARIE 961 D6442
SRR FLO-MARIE 961-150
BROWN JYJ REDEMPTION Y1334
LSF SRR REDEEM 4103B
LSF COUNTESS T7211 W9067
FM MACKEY 220-4381
SUTH UNLEADED 140X
LSF SRR HI FIRE B4381
SRR HI FIRE 6025-7109

	ProS	HB	GM	CED	BW	WW	YW	MILK	ME	HPG	CEM	STAY
EPD	97	61	36	16	-4.2	64	98	25	2	13	10	14
TOP %	61	33	82	16	12	58	64	54	39	20	8	63

Act BW	Adj WW
81	746

	ADG	YG	CW	REA	MARB	DMI
EPD	0.22	0.18	24	-0.08	0.34	0.73
TOP %	69	95	50	90	73	52

Top 16% Calving Ease, top 8% Calving Ease Maternal, and top 20% Heifer Pregnancy. He is the youngest bull in our offering this year.

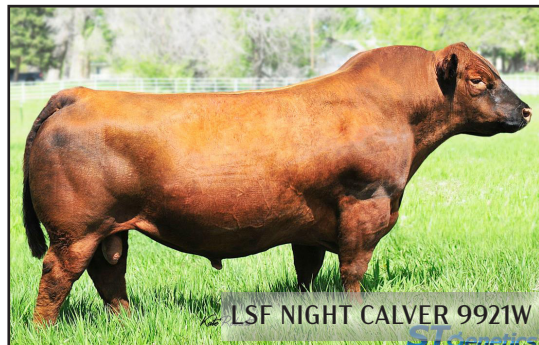
CONTACT US:

House 307-686-9091

Dudley 307-680-4401

Marilyn 307-680-2102

REFERENCE SIRES



LSF NIGHT CALVER 9921W

REG # 1368797

	ProS	HB	GM	CED	BW	WW	YW	MILK	ME	HPG	CEM	STAY
EPD	169	102	67	17	-6.6	70	115	30	3	20	12	17
TOP %	3	2	23	9	2	40	34	19	44	1	2	26

Act BW	Adj WW
65	687

	ADG	YG	CW	REA	MARB	DMI
EPD	0.28	0.12	37	0.52	0.45	0.78
TOP %	29	68	16	8	45	53



LSF PROSPECT 2035Z

REG # 1547645

	ProS	HB	GM	CED	BW	WW	YW	MILK	ME	HPG	CEM	STAY
EPD	134	90	44	15	-4.6	62	104	37	8	13	11	19
TOP %	15	5	59	29	10	67	56	1	71	30	6	10

Act BW	Adj WW
72	713

	ADG	YG	CW	REA	MARB	DMI
EPD	0.26	0.17	18	0.07	0.32	0.32
TOP %	42	84	68	57	69	14



LSF SRR REDEEM 4103B

REG # 1682142

	ProS	HB	GM	CED	BW	WW	YW	MILK	ME	HPG	CEM	STAY
EPD	121	69	52	15	-3.2	72	118	26	6	12	9	16
TOP %	27	22	46	25	25	33	29	53	57	43	17	30

Act BW	Adj WW
78	604

	ADG	YG	CW	REA	MARB	DMI
EPD	0.29	0.20	45	-0.03	0.28	1.09
TOP %	28	91	7	74	75	79



BIEBER STOCKMARKET E119

REG # 3751659

	ProS	HB	GM	CED	BW	WW	YW	MILK	ME	HPG	CEM	STAY
EPD	146	60	86	16	-4.7	79	132	26	8	14	11	13
TOP %	9	35	8	19	10	15	11	50	68	23	3	67

Act BW	Adj WW
64	640

	ADG	YG	CW	REA	MARB	DMI
EPD	0.33	0.20	25	0.23	1.22	1.54
TOP %	10	91	47	31	1	96



FM MACKEY CRMPRESS331 010

REG # 4307773

	ProS	HB	GM	CED	BW	WW	YW	MILK	ME	HPG	CEM	STAY
EPD	115	74	40	15	-4.9	56	79	26	-3	13	11	15
TOP %	33	16	66	23	8	83	92	449	18	28	7	43

Act BW	Adj WW
80	730

	ADG	YG	CW	REA	MARB	DMI
EPD	0.14	0.09	15	-0.03	0.42	0.05
TOP %	95	57	75	74	50	4



BULL TURNOUT DAY AFTER AI
JULY 3, 2024

BULLS BRED AND RAISED FOR PROFITABILITY

Thank you to our vets, Drs. Jay and Brandi Hudson, Lazy H Large Animal Services, LLC. Your services and expertise have been top notch and invaluable!

www.fmredangus.com



Thank You to our Customers!

Eric & Kelly Barlow

Doug & Susie Carr

Justin & Mandy Holcomb

Jake & Brittany Anderson

Antonette Curren

Bill Blauer

Danny Lanning

Henry Pagel

Christian & Cassie Holland

Justin & Trinity Lewis

Donny Scantling

Britt & Dan Swaney

Leroy Curren

Ryan & Anna Huxtable

Lex & Amanda Geer

P Cross Bar Ranch

Gerry & Gwen Geis,
Blue Gate Solutions LLC

Floyd III & Eda Reno,
Sioux Ranch Inc.

Jim Keeline,
3 Fingers Ranch



Commercial cows 10-21-24
Just weaned calves
after a hot, dry summer.

Our commercial heifers are being backgrounded in Morrill, NE. Howell farms has done a great job for us for several years. If you are interested in acquiring some of our genetics for your maternal herd, contact us for more information on these heifers. They have been sire verified and DNA ranked through Igenity Beef commercial Red Angus DNA test.





*May the road rise to meet you.
May the wind be always at your back.
May the sun shine warm upon your face.
May the rains fall soft upon your pastures.
And, until we meet again,
May God hold you in the hollow of His hand.
Irish blessing*

FM Red Angus

www.fmredangus.com

www.Facebook.com/FMRedAngus

fmredangus@vcn.com

Designed and created by Amity Kissack